

**Fiberdome**

# FiberGuard

**Complete Fiberglass Conveyor Cover System.**



**Fiberglass  
Construction**

**Strong • Lightweight • Durable • Corrosion-Proof**

Ideal for salt water ports & docks, fertilizer plants, chemical production plants  
and anywhere there is a corrosion concern.

Standard 4' Sections



# FiberGuard

## Complete Fiberglass Conveyor Cover System.

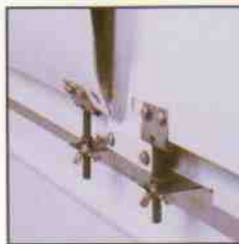
### The Cover

**COMPLETE PROTECTION...**No rust, corrosion or oxidation. No special maintenance needed. Increased safety.

**COMPLETE FLEXIBILITY...**Protects material from weather elements and controls dust. Stainless steel dual-hinge design allows EZ access from either side.

#### FEATURES:

- Designed to OSHA & E.P.A. Standards
- Heavy-Duty Fiberglass Support Bands
- Weather-Tight Seal
- Stainless Steel Hardware
- Available in 18" - 60" Belt Widths



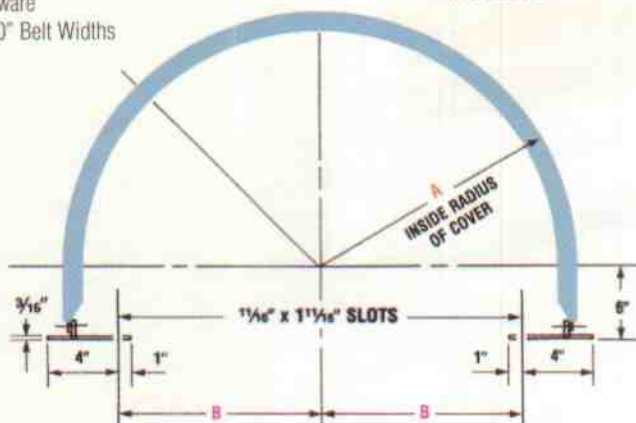
#### STANDARD DUAL-HINGE SYSTEM

- Allows safe access from either side.
- All brackets and hardware made of stainless steel.



#### FIBERGLASS SUPPORT BANDS

- Maximum Durability.
- Safety rope keeps hood open during access.



BELT WIDTH	A	B
18	16 1/4	13 1/2
24	19 1/4	16 1/2
30	22 1/4	19 1/2
36	25 1/4	22 1/2
42	28 1/4	25 1/2
48	31 1/4	28 1/2
54	34 1/4	31 1/2
60	37 1/4	34 1/2

### The System

Optional **FiberGuard** WeatherGuard and ReturnGuard designed for maximum protection from the elements.

#### FiberGuard WEATHERGUARD

Completely protects openings between support bands



#### FiberGuard RETURNGUARD

Offers complete return belt protection.



# *FiberGuard*

## **General Assembly Notes and Arrangement Drawings**

The following information is the general assembly notes and arrangement drawings. Please refer to the drawings at this time for a general arrangement of the FiberGuard Covers and Bands. These will show you the placement/spacing of the Base Plates, Support Bands and Covers. As well as with all the hardware required to assemble the covers and bands.

- **ASSEMBLY NOTES:**

Fasteners to hold base plates to customers steel to be "by others"

"U" Brackets and "T" Bolts will be shipped unassembled

Covers are shipped in separate crating

Bands are shipped in separate crating

Base Plates and all other hardware and fasteners are packaged together

- **FASTENERS REQUIRED TO ASSEMBLE ONE COVER:**

4 - "U" Brackets

4 - "T" Bolts 1/2" diameter

4 - Wing Nuts 1/2" diameter

8 - Flat Washers 1/2" diameter

4 - Hex Nuts 1/2" diameter

8 - Hex Head Bolts 3/8" diameter x 1-1/2" long

8 - Flat Washers 3/8" diameter

8 - Lock Washers 3/8" diameter

8 - Hex Nuts 3/8" diameter

- **FASTENERS REQUIRED TO ASSEMBLE ONE SUPPORT BAND**

4 - Hex Head Bolts 3/8" diameter x 1-1/2" long

4 - Flat Washers 3/8" diameter

4 - Lock Washers 3/8" diameter

4 - Hex Nuts 3/8" diameter

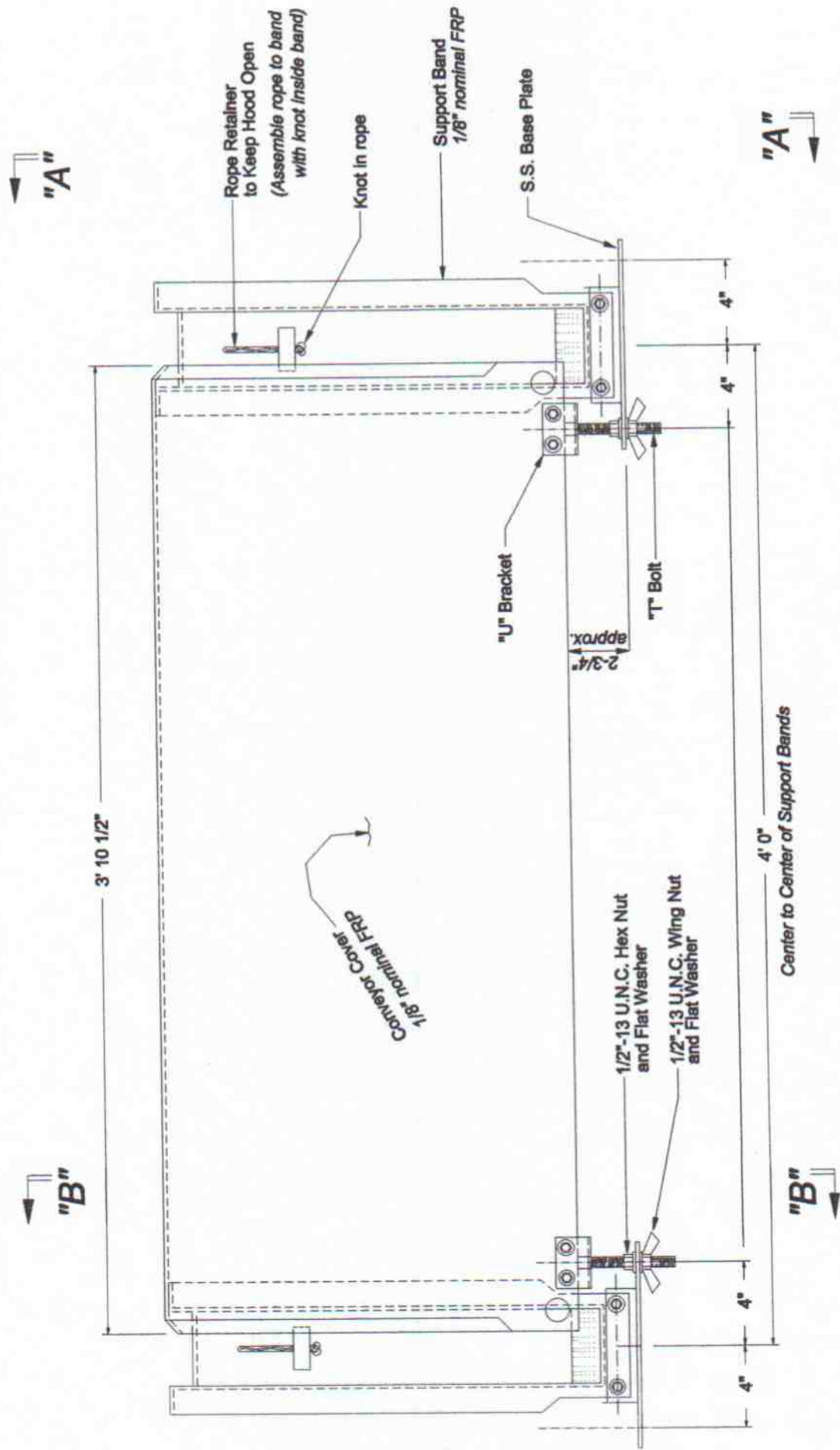
2 - Base Plates

**NOTE:** *ALL HARDWARE AND FASTENERS  
ARE STAINLESS STEEL*

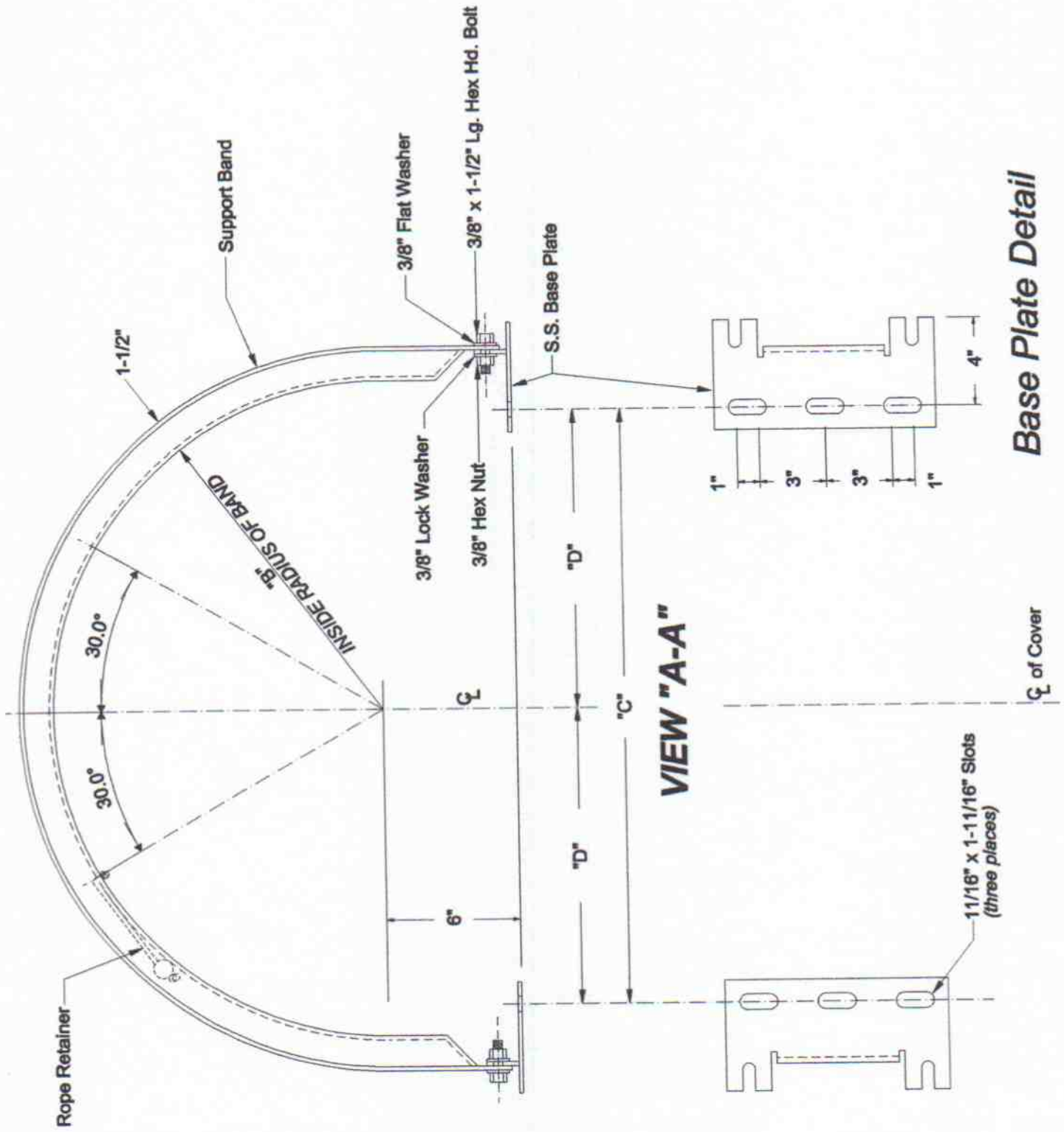
### *Key to Drawing Dimensions*

<b>Belt Width</b>	<b>A</b>	<b>B</b>	<b>C</b>	<b>D</b>
18	1' - 4-3/8"	1' - 2-7/8"	2' - 3"	1' - 1-1/2"
24	1' - 7-3/8"	1' - 5-7/8"	2' - 9"	1' - 4-1/2"
30	1' - 10-3/8"	1' - 8-7/8"	3' - 3"	1' - 7-1/2"
36	2' - 1-3/8"	1' - 11-7/8"	3' - 9"	1' - 10-1/2"
42	2' - 4-3/8"	2' - 2-7/8"	4' - 3"	2' - 1-1/2"
48	2' - 7-3/8"	2' - 5-7/8"	4' - 9"	2' - 4-1/2"
54	2' - 10-3/8"	2' - 8-7/8"	5' - 3"	2' - 7-1/2"
60	3' - 1-3/8"	2' - 11-7/8"	5' - 9"	2' - 10-1/2"
72	3' - 7-3/8"	3' - 5-7/8"	6' - 9"	3' - 4-1/2"

***Attached: Three Arrangement Drawings***

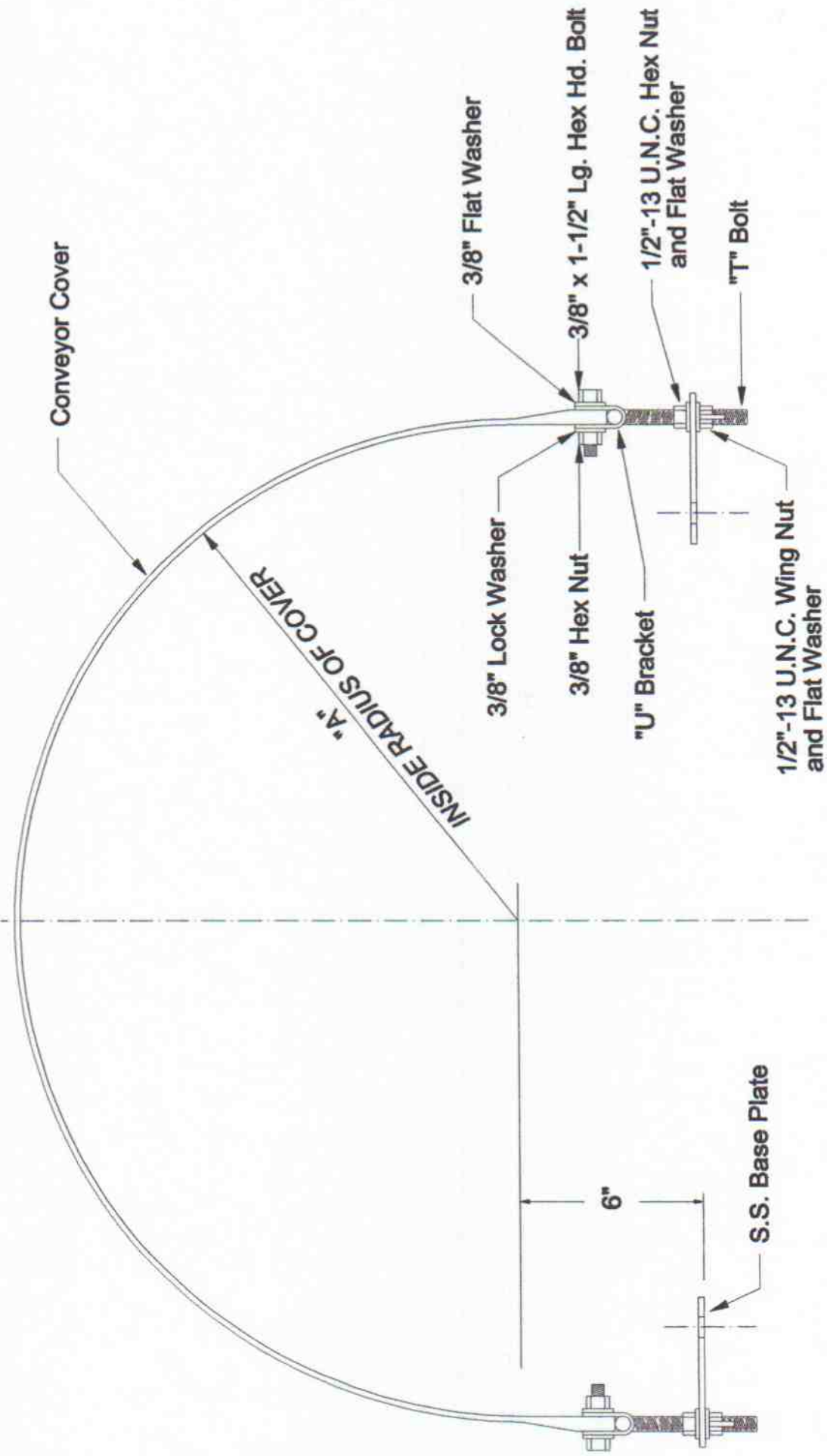


**SIDE VIEW**



**Base Plate Detail**

CL of Cover



**SECTION "B-B"**

# ***FiberGuard - System Options WeatherGuard & ReturnGuard***

## **General Assembly Notes and Arrangement Drawings**

The following information is the general assembly notes and arrangement drawings for the FiberGuard system options. Please refer to the drawings at this time for a general arrangement of the WeatherGuards and ReturnGuards. These will show you the placement, installation and hardware used on the WeatherGuards along with the general arrangement of the ReturnGuards.

### ***WeatherGuard***

- **ASSEMBLY NOTES - WeatherGuards:**

Install the WeatherGuards **BEFORE** the covers

When installing the WeatherGuards, do not tighten bolts until all guards are in place

WeatherGuards are shipped in separate crating

Hardware is packaged together

- **FASTENERS REQUIRED TO ASSEMBLE ONE WeatherGuard:**

4 - Flat Washers 1/4" diameter

2 - Hex Lock Nuts 1/4" diameter

2 - Hex Head Bolts 1/4" diameter

**NOTE:**      ***ALL HARDWARE IS STAINLESS STEEL***

### ***ReturnGuard***

- **ASSEMBLY NOTES - ReturnGuards:**

Start at one end of the conveyor and install to conveyor truss work/side member system

Make use of the overlap design for maximum protection

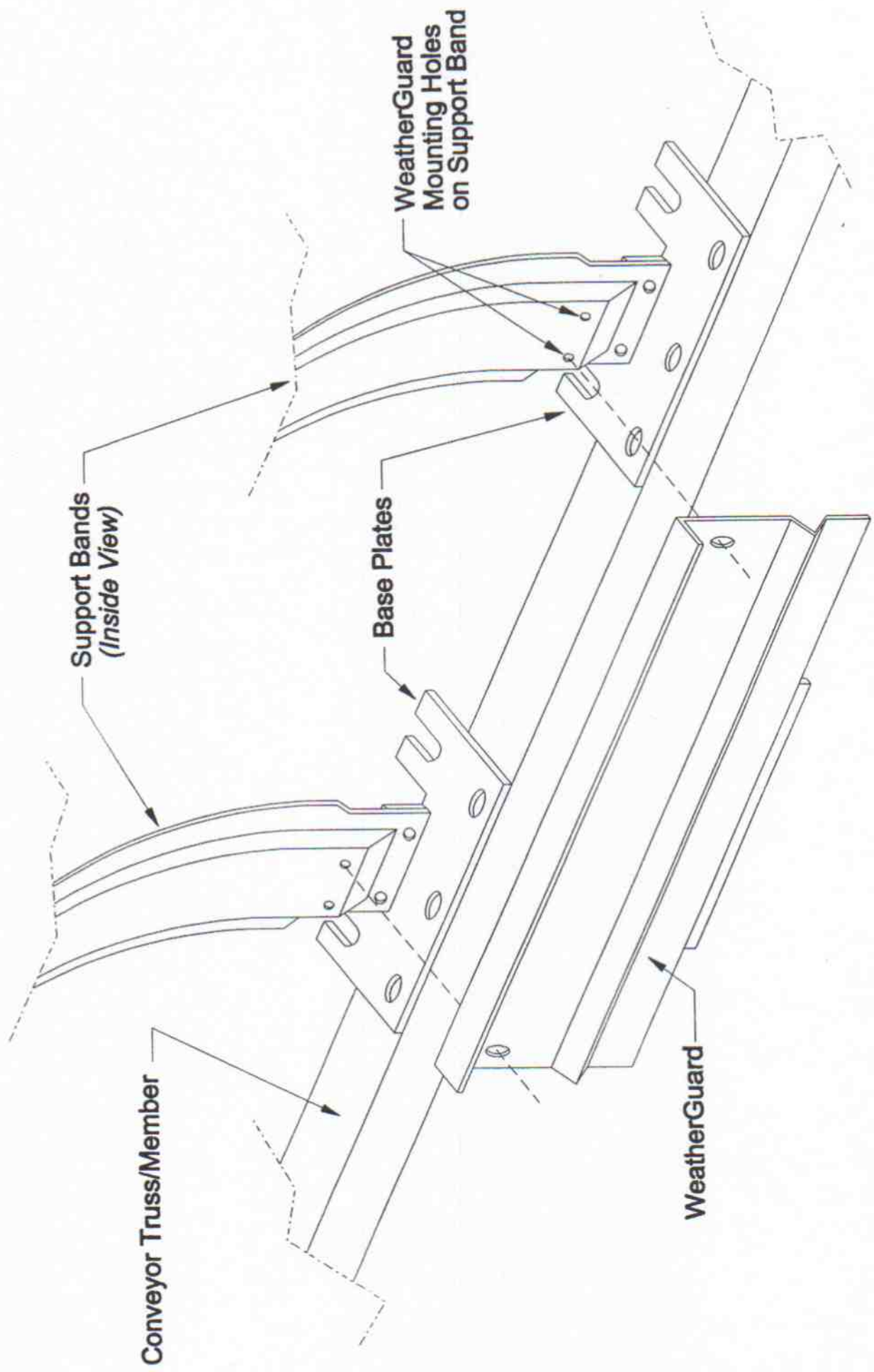
All holes to be field located and drilled - standard jobber bit sufficient for FRP

ReturnGuards are shipped in separate crating

All hardware to be supplied "**by others**"

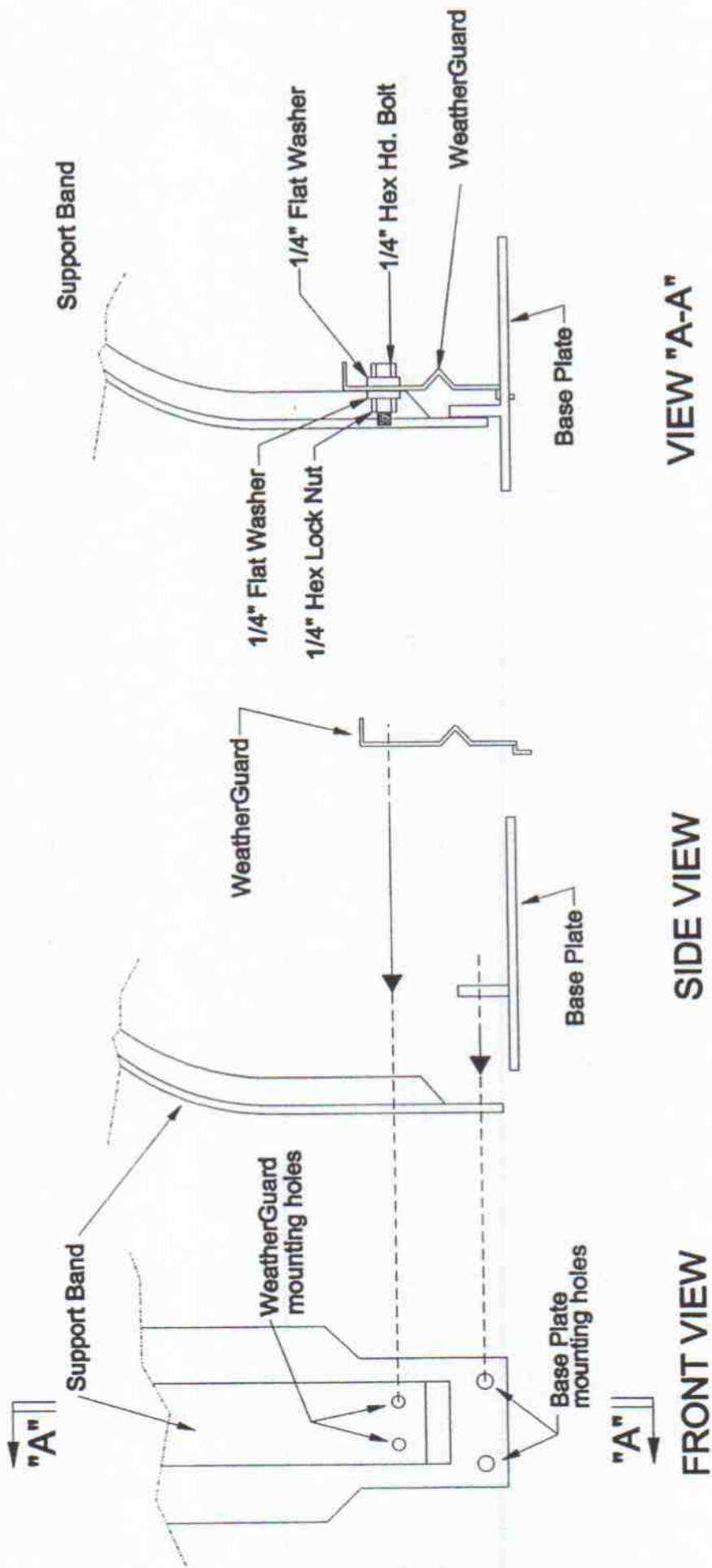
\* Return Guard is 18" Tall.

***Attached: Three Arrangement Drawings***

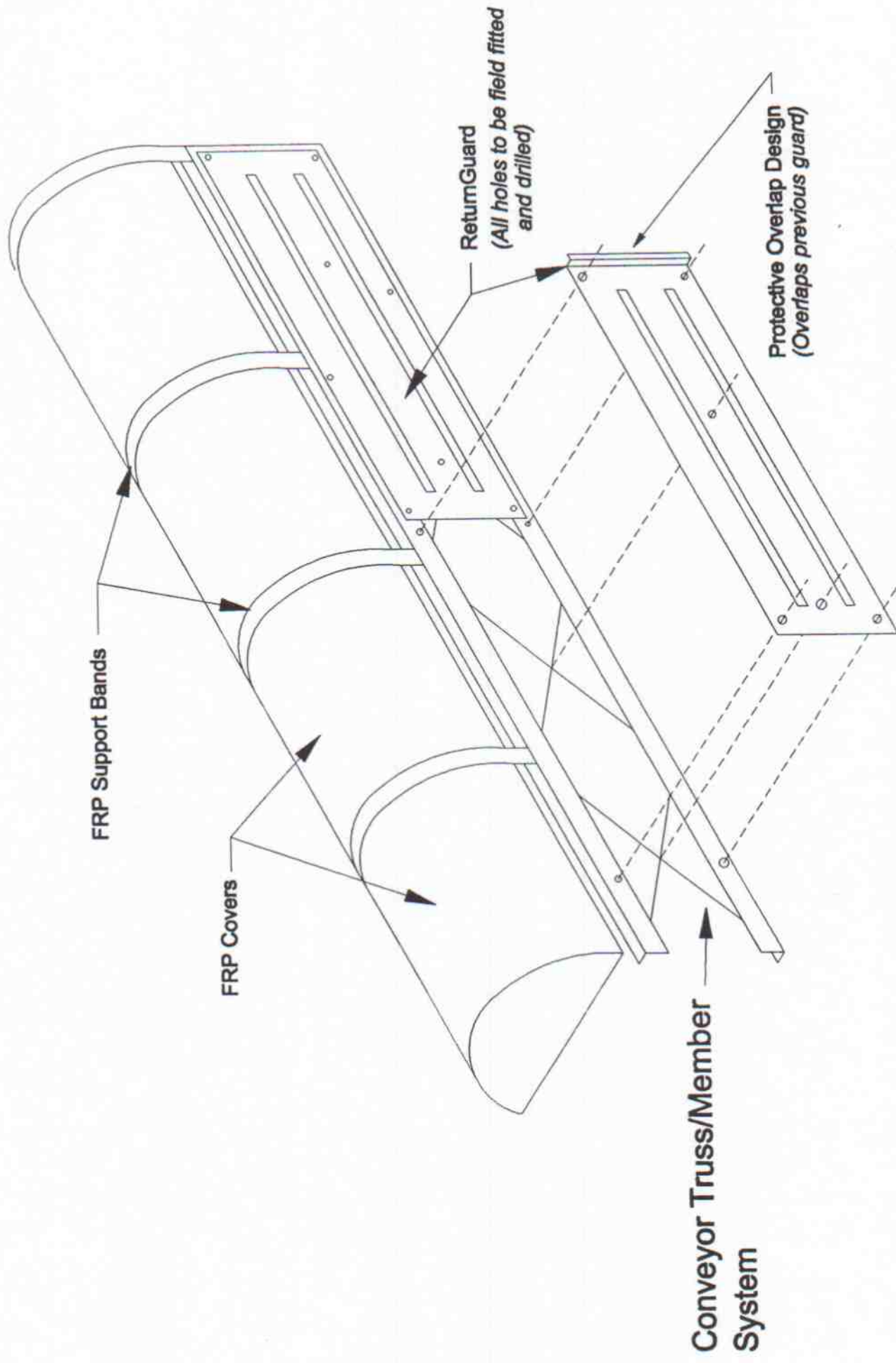


**WeatherGuard Installation Detail**  
**ISO View**





# WeatherGuard Installation Detail



**ReturnGuard General Arrangement Detail  
ISO VIEW**